

FontSavidha 5.0 - Professional

About FontSavidha Project

We are living in the Information Technology age. For a multi-lingual, Multi-Cultural country like India, computing solutions in Indian Languages was a must. A number of software packages in Indian Languages are now available. Indian Language computing has been popular since years now.

People using Indian Language Software have always faced a few problems such as non-standardisation of keyboards and font encoding. The non-compatibility of text amongst different Indian Language fonts has posed an acute problem for those using Indian Languages for Computing. Fonts for English text can be very easily changed in packages like MS Word etc, just by selecting a particular text block. However such facility is not available for Indian Languages. Taking the example of Devnagari alone, at this moment there are more than 55 popular Devnagari font formats and 5 different keyboard layouts. A document composed with any of these fonts can not be read in MS Word or even in any other application, if the specific font is not available, leave alone editing that document. This is true with all such available fonts and formats. There always was a strong need to overcome this practical problem.

The people behind **IL Infotech Pvt Ltd** have always been in the forefront in promoting Indian Language applications on & off the Internet for many years now. A project was undertaken to overcome the said limitation and allow easy transformation of documents from one font format to another.

FontSavidha emerged as a single point solution that addresses this acute need of conversion of documents from one format to another. It is now possible to just select a particular text and change the font from any of those available with you in just seconds. This is like changing your document font from Times New Roman to Arial within your MS Word document itself!!!! This means, now you can use a combination of Indian Language fonts, even if you compose your document with one software, having a limited number of fonts.

One of the biggest limitations of the Indian Language Software Titles available in the market today is, you can type only in the supported font. **FontSavidha** gives a much-awaited convenience to the Indian user, to use more than 200 fonts even if one has a software allowing use of a few fonts. Yes! Now it is possible to type your documents in any Devnagari software & make use of any other Devnagari fonts from other vendors for decorating your document!!!!

The conversion facility is extended to HTML, TEXT, Excel, Dbf, MDB files also. Thus, such files can now be universally handled. The Text File Converter comes handy with capability to convert text files from any format to any other format. Web developers can use the HTML file converter to manage files across various font formats. A great utility offered by **FontSavidha** is the Clipboard Converter. This allows the user to convert the text in the clipboard to any desired font format. This facilitates the user to manage files in packages like PageMaker, Netscape Composer, Dreamweaver, Wordpad etc. or any other Windows based application software.

FontSavidha 5.0 comes to you with a total of 55 format conversions. We are constantly adding to the collection & will provide you update on these as & when one is developed. For this, it is extremely necessary that you register yourself with us, so that we can keep a track of your whereabouts to inform you of the updates. You can fill up the Registration Form available in the Program Group of **FontSavidha**.

Technical Specifications

Name of Software : FontSuvidha 5.0 - Professional.
Release Version : 5.0.2
Date of Release : 1st January 2004
No. of Formats : 55 Popular Devnagari Fonts.

Names of Formats:

1. Ajay Normal (C-DAC ISFOC/AllType)	2. AkLite (Akruti)
3. AkrutiDev (Akruti)	4. AkrutiGaneshDev (Akruti)
5. AkrutiOffice (Akruti)	6. Aman
Ankit	Agra (Moser Database)
7. Amar Ujala	8. APS-DV (VSOFT)
9. APS-EML-DV (VSOFT)	10. Bhartiya Hindi
11. Bhaskar	12. Chanakya (Summit/Indica)
13. DVB-TT (C-DAC)	14. DVBW-TT (C-DAC)
15. DVONIL (Sulipi)	16. DV-TT (C-DAC)
17. Gul	18. ILDV (Cybershoppee/FontFreedom/Freedom)
19. ILDVW-Web Series (Cybershoppee)	20. Indian Script Code For Information Interchange (ISCII)
21. ITR-ATM	22. ITRFK-Dev (ITR/Modular/Shree Lipi)
23. ITR-TTF	24. Jagran
25. Kautilya (WordStream)	26. Kiran
Amruta	Aarti Fonts
27. Kruti Dev Series (More Services)	28. LangscapeDev (Freedom/Akruti)
29. LokWeb (Loksatta Internet Edition)	30. LscapeRegDev (Freedom/Akruti)
31. Maha (Maharashtra Times)	32. Millennium (Cybershoppee/FontFreedom/Freedom)
33. Mithi	34. Naidunia (Naidunia/Webdunia)
35. Narad	36. Sahara India
37. Samskrt	38. Shivaji

Shusha (BharatBhasha)	39. SHREE708 (ShreeLipi-ATM-Version 2.0/3.0)
40. SHREE709 (ShreeLipi-ATM)	41. SHREE709 (ShreeLipi-ATM-Version 2.0/3.0)
42. SHREE714 (ShreeLipi-ATM)	43. SHREE733 (ShreeLipi-ATM-Version 2.0/3.0)
44. Shree-Dev (ShreeLipi-TTF-Version 5.0/Ankur)	45. ShreeDev Series (ShreeLipi-TTF-Version 3.0)
46. SUBAK (Sakal News Paper)	47. Sudipto (Maharashtra Times)
48. Umesh Fonts	49. UNI Fonts
50. UNICODE Fonts (Mangal	Arial Unicode MS)
51. Xdvng	52. Yogeshweb
53. NCHindi	54. Express
55. Dv Divyae	

Note: If you have any other formats that do not appear in this list and you feel should be included in this Converter, please let us know. Also send us the TTF file & a DOC file containing text composed in the related font.

Who can use FontSavidha?

Any person or organization using any Devnagari editing software can use **FontSavidha**. These includes Newspapers, Book Publishers, DTP Houses, Journalists, Individuals and of course Government Organisations.

The wide variety of Devnagari Editing software available in the market today, and with the diversity of the keyboards, it is practically impossible for one to buy all these software packages. Thus users are deprived of reading and editing material composed in fonts not supported by the software available with them. Such users can now benefit from the **FontSavidha**. All they need to do is, change the font of the document to the one available with them and go on reading!

Newspapers can get their news from journalists sitting at home, using any software or font available. This material can be converted to the font of choice, using **FontSavidha**, and be sent for publishing. Journalists can thus report in Real Time, without the need of having access to a computer where a particular font used by their newspaper is installed. The filing of News item or report can be done even from a Cybercafe.

Feature Agencies can particularly benefit from **FontSavidha** as they can now get typed material from many sources, without the need of a particular font. The material thus received can be accommodated to use the default font used by the organization. It will even make the distribution of material and features to various customers, in their own formats.

DTP houses can now benefit from the **FontSavidha**, as they don't need to have so many different packages to work in Indian Languages. They can get typed material in any software, in any font, and can convert it to the one they want.

In **Government offices**, where a number of software and fonts are used in the same department, an acute problem that of interchangeability of documents from one desk to other has posed many problems. Government offices can now benefit from **FontSavidha**, as documents composed on any software can now be opened using **FontSavidha**, can be edited and be sent to the originator. This will give boon to the concept of paperless e-governance in real terms.

Book Publishers can benefit from **FontSavidha**, as in these days of Information Technology, many authors have started using computers for writing. Publishers can get the electronic manuscript from these authors, no matter what font has been used, and can work on the same using the font of their choice.

With the widespread use of Indian Language editing software in the **Home Sector**, the need of such a facility was much felt. **Individuals** can now exchange documents, no matter what font or software has been used, and read, edit or comment on the document freely.

Fonts and Font Families

The various sets of characters that we use for typing our documents are called Fonts. A font comprises of set of characters, generally with a common look and texture. In English, the fonts comprise of characters like A to Z, 1 to 0 and other standard characters like \$, &, #, @ etc.

In case of Devnagari, this differs in a big way. Unlike in English, there are many complications while writing in Devnagari. We need to represent characters and words with Matras, Anuswaras, Kaanaas etc. This involves the use of both upper and lower ASCII characters, which are mapped to the keyboard. Here exactly lies the problem of standardisation of Devnagari Fonts. Many companies developing fonts and technologies in Devnagari had used different mapping styles for these characters, thus resulting in the problem of non-compatibility.

The primary aim of **FontSuidha** is to convert documents from one **KNOWN format** to another **KNOWN format**. The basic assumption here is that, someone who is trying to convert a document **MUST** know the source font and the destination font. If he doesn't know either of these, he does not need conversion.

Before going ahead with the actual use of **FontSuidha**, it will be helpful to know some basic facts about the fonts and font families.

There is a big difference in **FONT** and **FONT FORMAT or FAMILY**. The sections below will be of great help to those using FontSuidha.

FONT FAMILY:

This is known as the **FONT FORMAT** also. This is the set of encoding for the font. The basic issue of non-standardisation of Devnagari fonts revolves around this. The encoding of fonts developed by various vendors differ in a big way and this is the reason we had to develop **FontSuidha**.

There are a number of such Font Formats or Font Families existing in the market today. There are many complications in this issue too. If you think that one manufacturer constitutes to one family, it is not so. There are instances where a same manufacturer has developed and distributed more than one family. The example of this is C-DAC, AkruTi and ShriLipi. C-DAC has more than 2 formats. AkruTi has 4 formats and in case of ShriLipi there are many.

In short, a **FONT FAMILY** is something like DV-TT*ABCD*, DV*B*-TT*ABCD*, AkruTiDev*XYZ* etc.

FONT:

This is the actual set of characters in a **FONT FAMILY**. There can be a number of such **FONT**s in a specific **FONT FAMILY**. There could be Ten, Hundred or a few Hundred **FONT**s in **ONE FONT FAMILY**. The Fonts in a family have the same encoding. That means, there is a full transformability of documents from one font to another if the **FONT** belongs to the same **FONT FAMILY**. This is the reason we can use fonts like DV-TT*Surekh* and DV-TT*Yogesh*, without the need of **FontSuidha** Converter.

SOURCE FONT FAMILY:

This is the **FONT FAMILY** in which a document is composed. The person using the converter may not be having the **FONT** of the **SOURCE FONT FAMILY** and thus he needs to convert the document from a **FONT** in **SOURCE FONT FAMILY** to a **FONT** available with him on his machine.

DESTINATION FONT FAMILY:

This is the **FONT FAMILY** which one needs to convert a document into. Anyone using any Devnagari software knows which software he is using. The **FONT NAMES** in particular software start with some similarity such as AkruTiDev, DV-TT, DVB-TT, SHREE etc. This is known to the person trying to convert a document. However there are some exceptions to this too. There is no such common string in the FONT NAMES in case of FONT FAMILY of Moser Database and to some extent, BharatBhasha. This is another example of non-standardisation. We just can not do anything about it.

DESTINATION FONT:

Any user trying to use **FontSuvudha** must at least know this. This is the name of the actual font available with him. Thus, he can select the destination font without trouble. There may be some confusion in the minds of some of the users while selecting the destination font and we would like to throw some light on this critical issue.

The FONT names in the list of DESTINATION FONTS appearing in **FontSuvudha** are hardcoded into the software itself. In some of the families, there are more than few hundred fonts in use. It is practically impossible to include all of them. Further, it is practically impossible for the user to scroll down the list every time he wants to convert some text. Thus, we had to include only few font names that are commonly in use. There are possibilities where some of the FONT NAMES in some FONT FAMILIES may not be appearing in the list.

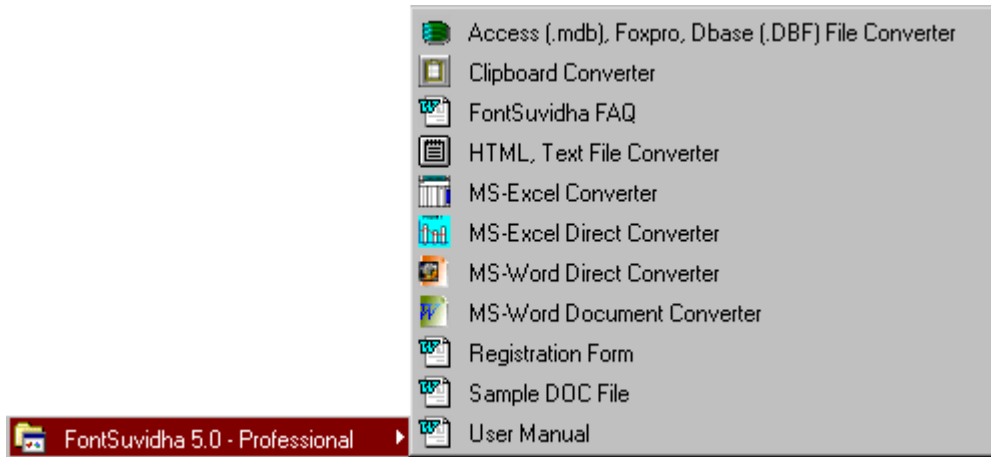
This may create some confusion in the mind of the users. Here is an example, which could throw some light on this. SHREE Lipi TTF Series, we have included only about 30 Font names, whereas there are more than 500 other font names belonging to the same family. Since we **DID NOT** want to give a big scrollable list, which could prove to be a problem for frequent user of FontSuvudha, we did not include all of them in the list. However this **DOES NOT** mean that the conversion is not included. The conversion very much takes place. However the user may see some junk on his screen. He then needs to just change the font of the document to the desired one manually.

Here exactly the assumption that one should know the font family name of his font comes in picture. If you know you are using Shree Lipi TTF fonts, and have been using these fonts, you can see all the names starting with SHREE, followed by a number. Now if you don't find a particular font number in the list, you can convert the text into any other font starting with SHREE. You may see some junk on the screen. Now all that you need to do is, select this junk and change the font name from the ones you have and you are through!

There are a number of **FONT FAMILIES** in use. For a complete list, please look at the bottom of this document.

How to Use FontSuvridha

For using '**FontSuvridha**' you will need to keep the CD inside your CD-ROM drive. After you install **FontSuvridha** you will see following menus in '**Start Program**'.



As you can see above, FontSuvridha has several Modules catering to different requirements. In this brief e-Brochure, we explain to you the way how you can convert text in MS Word from one font to another.

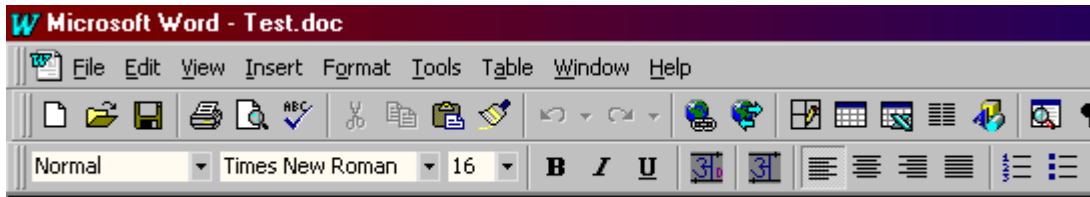
- **Converter For MS-Word**

This module is for converting the MS Word documents from within MS Word only. There are two converters for MS-Word.

- **MS-Word Document Converter:** In this case user needs to select the data, which he wants to convert. Then he needs to run '**MS-Word Document Converter**' and select the source font family and destination font. After that when he clicks on convert button, selected text will get converted to destination font.
- **MS-Word Direct Converter:** This is just like changing your font from Arial to Times New Roman. This is a quick module, enabling you to convert the selected text without going through the steps as mentioned above. All you need to do here is, just run the '**MS-Word Direct Converter**' once. Then just change the Font in the Font Window of MS Word and that's all. The entire proceedings are then taken over by the program and the conversion is done for you.

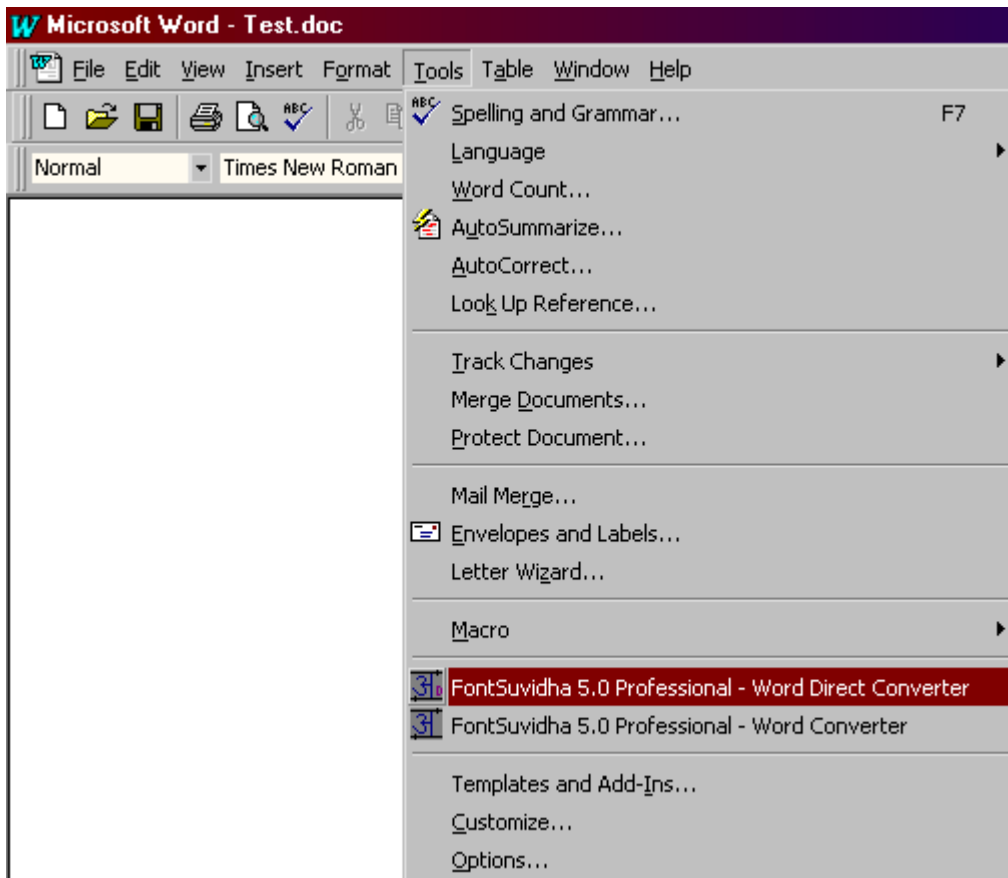
User can run these converters from two locations. One is the '**Start Program**' menu and second one is from MS-Word.

In MS-Word on the Format Toolbar two icons appears as shown below. One icon is for '**MS-Word Document Converter**' and second is for '**MS-Word Direct Converter**'.



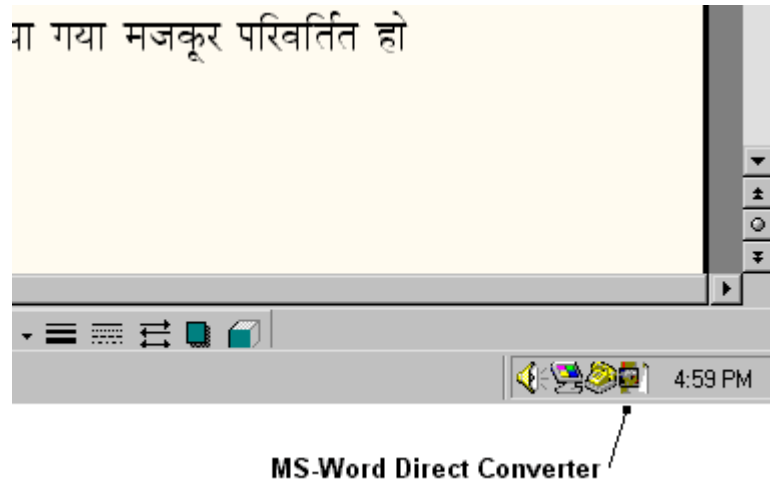
MS-Word Direct Converter MS-Word Document Converter

These two are also available in 'Tools' menu of MS-Word.

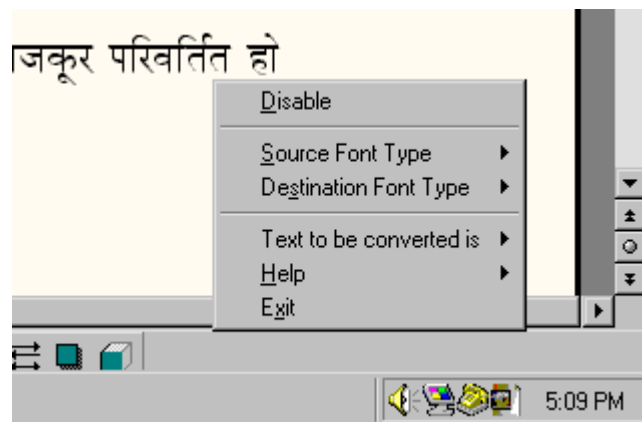


- **MS-Word Direct Converter**

When you start MS-Word you can run this converter. You will see the icon in the system tray in right bottom corner on task bar.

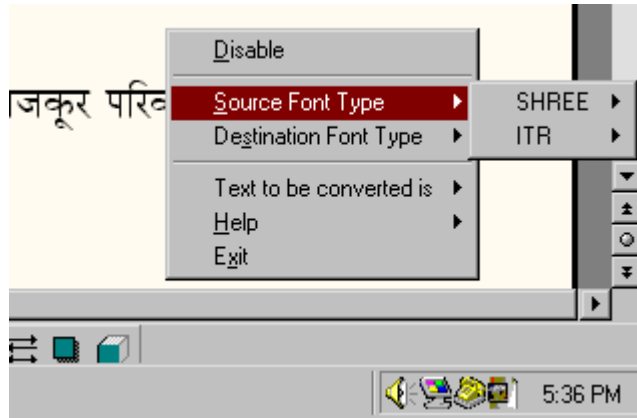


If you click on that icon you will get the following menus.



Disable/Enable:

You can disable this direct converter if you do not want conversion to be get done while changing the font of the text. You can enable it when you want. When you first run this converter by default it will be in enabled state.



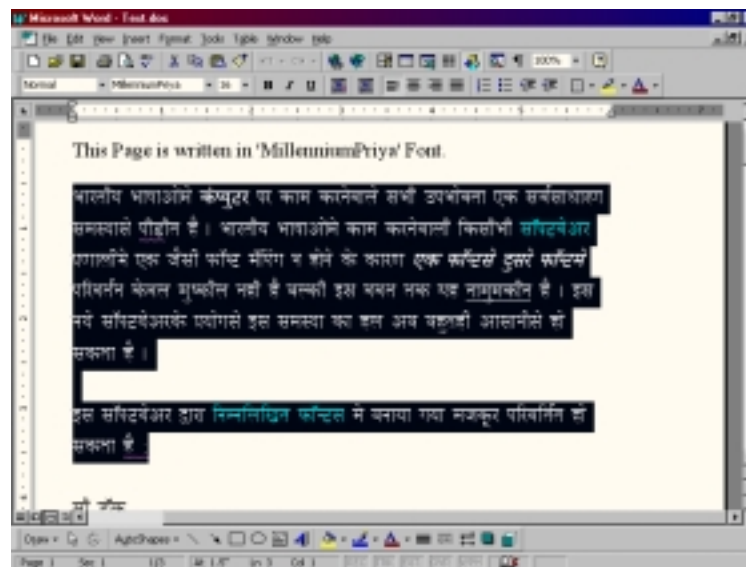
Source Font Type, Destination Font Type:

'Source Font Type' and 'Destination Font Type' selection is required in case of Shree Lipi fonts and ITR fonts. This is because shree lipi fonts have different versions. And font names in all versions are same; e.g. 'Shree708' font is available in more than two versions. So when you want to convert data from/to such type of font you can select appropriate versions in the 'Source Font Type' or 'Destination Font Type'. As far as ITR fonts are concerned there are two types 'ATM' and 'TTF'. In case of conversion of these fonts you can select above parameters accordingly.

Text to be converted is:

As per your requirement you can select the conversion type i.e. 'Formatted' or 'Unformatted'.

Once this converter is started, whenever you change the font of selected text the conversion will take place.



Modules in FontSuidha

Apart from the MS Word Converter, FontSuidha offers you a facility to convert text from various other files. Separate modules are included for doing this within FontSuidha. The Modules include:

- **MS Word Converter**
This is for converting text in a DOC file.
- **MS Word Direct Converter**
This is for converting text in DOC file directly (As explained above)
- **MS Excel Converter**
This is for converting data in Excel Spreadsheet.
- **MS Excel Direct Converter**
This is for converting data in Excel spreadsheet directly.
- **Access & Database Converter**
This is for converting database in Access etc.
- **Text File Converter**
This is for converting data in plain Text file
- **HTML File Converter**
This is for converting a HTML file
- **IE (Internet Explorer) Direct Converter**
This is for converting matter directly from within Internet Explorer
- **Clipboard Converter**
This is for converting any text in the Clipboard. This can be used for converting text in Pagemaker, Power Point, Smart Suite or any other application.

- **Font Families Included in FontSuvudha**

In Devnagari, there are a number of **FONT FAMILIES** in use. We have tried to pick some important families of these. Our constant R & D efforts help us in keeping the software updated for any new fonts coming in the market.

A comprehensive list of all fonts supported for conversion in FontSuvudha is given in a separate document.

There are many more fonts coming in, along with new families in our later versions. If you happen to know some fonts that are not covered for conversion in FontSuvudha, please do let us know. We will surely try to include the same in future releases.

Do keep visiting our web site to find interesting information on Devnagari Fonts from time to time.

Contact Us

FontSuvudha 5.0 - Professional

The revolutionary Software, breaking the barriers of Devnagari Font Conversion!

For Trade Enquiry, Contact:

IL Infotech Pvt. Ltd.

Chanakya, 2nd Floor, Gokhale Road, Naupada,

Thane 400602, Maharashtra, India

Tel No: 91-22-5421185 / 91-22-5339003

E-mail: info@cybershoppee.com & ninad@bom3.vsnl.net.in

Web: www.cybershoppee.com

Note: The Copyrights of the software and font names in this document are properties of respective manufacturers.