

FontSavidha 6.5.5 - Professional

Release : 6.5.5

Documentation Release Date: 28 February 2017

Thank you for Purchasing FontSavidha.

About FontSavidha

FontSavidha is a software allowing you to convert Devnagari documents from one font format to another easily. This revolutionary software was first launched on December 11th December 2000. Since then the developments have been so fast that in next few months 5 newer versions were released. In this version 11 new formats are added.

The program interface is changed in this version. This offers great user convenience in using the software.

System Requirements :

Any Computer running Windows 9x or above
12 to 15 MB free Hard Disk Space

Installation Procedure :

This is a single user version of FontSavidha. You can not run FontSavidha on a network.

You have downloaded the ZIP file from our website. You need to unzip this file to a suitable folder on your computer. It is recommended to extract the ZIP file contents to a folder named **FontSavidha-6.5.5**

In the extracted folder, you will find the following files and folders

Documentation	(Folder)
FontSavidha - 6.5.5 Setup Files	(Folder)
FontSavidha 6.0 Setup Files	(Folder)
Mstdfmt	(Folder)
Videos - Demo	(Folder)
For-Activation-PHDG.exe	
Installation-Guide.pdf	(This File)
Readme.txt	

There are Two versions of FontSavidha in this Download. You have to install "FontSavidha 6.0" first. Once this is installed, you can install "fontSavidha 6.5.5".

Few Functions of FS 6.5.5 are dependent on FS 6.0. You are required to install both the versions.

INSTALLATION – FontSuidha 6.0

To install FontSuidha 6.0, go to the setup Files folder <**FontSuidha 6.0 Setup Files**>.

Here you will have to run setup.exe & the installation will begin. You will be prompted to type path for installation. Please give appropriate path of your Hard Disk, where you want the software to be installed. As a default, this path is **\Program Files\FontSuidha 6.0 - Professional**. You may change this if you wish.

The program will then ask you for the program Group where the software will be made available. The default is FontSuidha 6.0 - Professional. You can change this as well.

Now the installation will start & you will be prompted when this is over.

Now you will find icons for

- MS-Word Document Converter
- MS-Word Direct Converter
- Clipboard Converter
- HTML, Text File Converter
- MS-Excel Converter
- MS-Excel Direct Converter
- Access (.mdb), Foxpro, Dbase (.DBF) File Converter
- User Manual
- Registration Form
- Sample DOC File
- FontSuidha FAQ

INSTALLATION – FontSuidha 6.5.5

To install FontSuidha 6.5.5, go to the setup file folder <**FontSuidha - 6.5.5 Setup Files**>

Here you will have to run setup.exe & the installation will begin. You will be prompted to type path for installation. Please give appropriate path of your Hard Disk, where you want the software to be installed. As a default, this path is **\Program Files\FontSuidha 6.5.5**. You may change this if you wish.

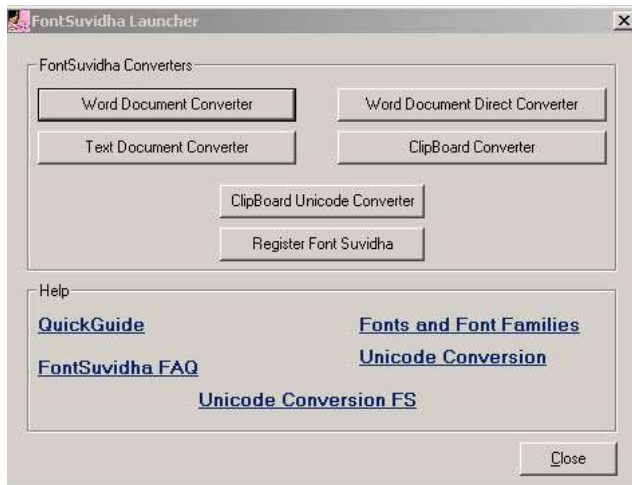
Now the installation will start & you will be prompted when this is over.

Very Important Note: If you are installing the software on Windows 7 and above, you will need to run the setup.exe file with Administrator rights. This means, you will have to right click on the setup.exe and use "Run As Administrator" option.

Registration and Activation Process

Before you start using FontSuidha, you need to activate it. You can Register and Activate FontSuidha 6.5.5 using the on-screen form. If you register FontSuidha 6.5.5, the registration of FontSuidha 6.0 will be automatically done.

After successful installation when you run the software for the first time, you will be asked to enter a Personal key Number. You will have to Register the software to get the Key Number.



When you run FontSuidha 6.5.5 for the first time, you will see the following screen. Here you have to click on **Register FontSuidha** button.

This screen has other options too. You will be using them later. The first thing is to Register your copy and get the Key so that you can proceed.

For FS 6.5.5, the on-screen registration form is self-explanatory. Please type your **Name**, **Phone Number** and **Email ID** in the form. You will see a long string of number in the box below. You have to copy this content from the box and send to us to get the Key.

Please visit www.fontsuidha.com and go to GET KEY NUMBER (PKN) Link in the menu. Submit the information on the form and send it to us. On receiving your details, we will send the Key to you. You have to enter the Key in the box provided at the end of the screen and click on **Register** button. This will complete the Registration and you will be able to use **FontSuidha**.

If you have registered for FS 6.5.5, you do not need to separately register for FS 6.0. However to get the Key Number For FS 6.0, send the required RT2 file (in FS 6.0 version) back to us for Registration. (Read more about this file in the documentation).

We are sure you will find FontSuidha very useful. Please do write back your valuable comments.

In case you find any issues in registration of FontSuidha 6.5.5 from the on-screen form, please follow the procedure given below.

We have included a file named "For-Activation-PHDG.exe" with the setup. You will need to run this file once on your computer. It will generate a file on the root of your computer. The path will be 'c:\ilinfotech.rt2' on your computer. Open the file in any Text Editor like Notepad or Wordpad and copy the string of numbers in the file. Now go to www.fontsuidha.com and fill up the form available at **FET KEY NUMBER (PKN) link**. Fill up all the required information and send the form to us. We will then send the Key Number to you by e-mail.

Once you get this Activation Key Number, you will have to run any of the Nine available converters such as "HTML, Text File Converter", "Clipboard Converter" etc. Now you will be asked the Activation Key Number. After successful registration of the Activation Key Number, FontSuidha Program will start.

Now you can use the software as explained in the User Manual.

Version History :

Ver 1.0 :

Launched on December 11th 2000, at the hands of Mr Dewang Mehta, the then President of NASSCOM. This version had conversion support for 12 Fonts.

Ver 1.1 :

Released on January 5th 2001. This included support for 18 fonts. Direct Quick Conversion in MS Word was included in this.

Ver 1.5 :

Released on 20th March 2001. Number of fonts supported increased to 22.

Ver 2.0 :

Released on 20th July 2001. Number of Fonts Supported were 25. Support for MS EXCEL and MS ACCESS databases added. Clipboard Converter for Formatted data was added.

Ver 3.0 :

Released on 5th August 2001. MS EXCEL Direct data conversion added. Number of Font Formats supported are 30.

Ver 4.0 :

Released on 26th March 2002. Unicode font format is added. Number of Font Formats supported are 34.

Ver 5.0 :

Released on 15th August 2002. Number of Font Formats supported are 45.

Ver 5.0.1 :

Released on 1st January 2003. Number of Font Formats supported are 52.

Ver 6.0 :

Released on 2nd April 2004. Number of Font Formats supported are 55.

From Here onwards, we will be releasing the updates of font definitions and will be providing these to the registered versions. These font definition updates may be charged for.

We will keep you informed on this. Please send in your registration form at the earliest to receive our update announcements.

We thank you for using our software. We are sure, this helps you in your routine tasks. Should you need any assistance, please do not hesitate to call on us or contact us at any of the addresses mentioned on the CD, Manuals or other documentation.

Ver 6.1 to 6.5 :

These included Clipboard Converter for Unicode. Support for few fonts was added. Some conversion errors were removed.

Ver 6.5.5 (This version)

Clipboard converters were integrated into the mail module. Support for Win 7 and higher was included.

For Any more information or support, please contact us at the following address.

Please quote the **Reference Number** in all your future communication for quicker response.

CyberShoppee.com

Chanakya, 3d Floor,
Behind Classic Plaza,
Gokhale Road, Naupada,
Thane 400602, India

Tel : 91 22 25421185

E-mail : support@cybershoppee.com

Web : www.cybershoppee.com / www.fontsuvidha.com

Documentation Release Date: 28 February 2017